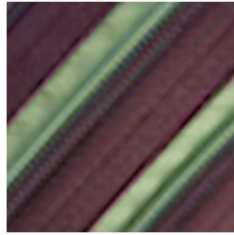
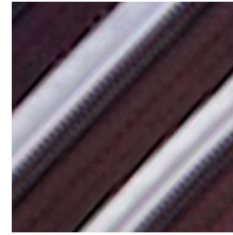
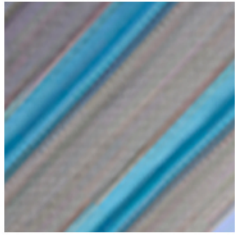
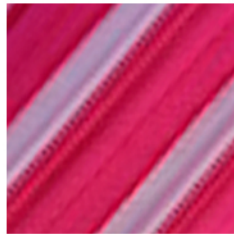
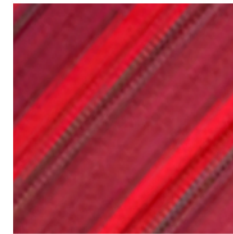
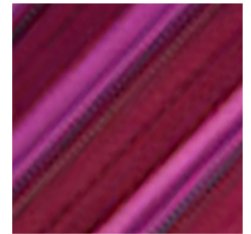
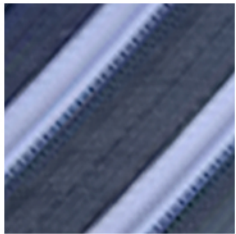
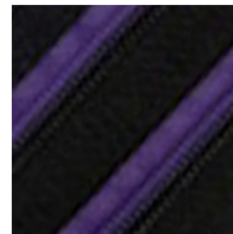
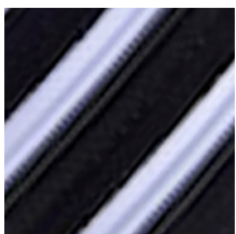
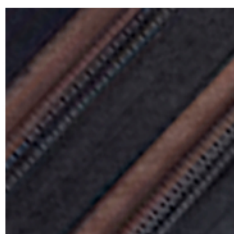


Choco
Turquoise ClairChoco
BambouChoco
OrangeChoco
IvoireCafé
RouilleCrème
Turquoise ClairCrème
DragéeCrème
MentheDragée
BlancEmeraude
BlancFuchsia
BlancFuchsia
DragéePrune
FuchsiaPrune
RougePrune
Vieux RoseGris Foncé
BlancGris Foncé
FuchsiaGris Foncé
OrangeGris Foncé
Pis. AciduléeViolet
Pis. AciduléeViolet
BlancViolet
MauveViolet
FuchsiaNoir
VioletNoir
FuchsiaNoir
BlancNoir
ChocoNoir
RougeRouge
BlancGitane
Blanc

Et bien d'autres encore : Taupe-Champagne, Noir-Gris, Noir-Ivoire... (cf YKK Colors 1 et 2)